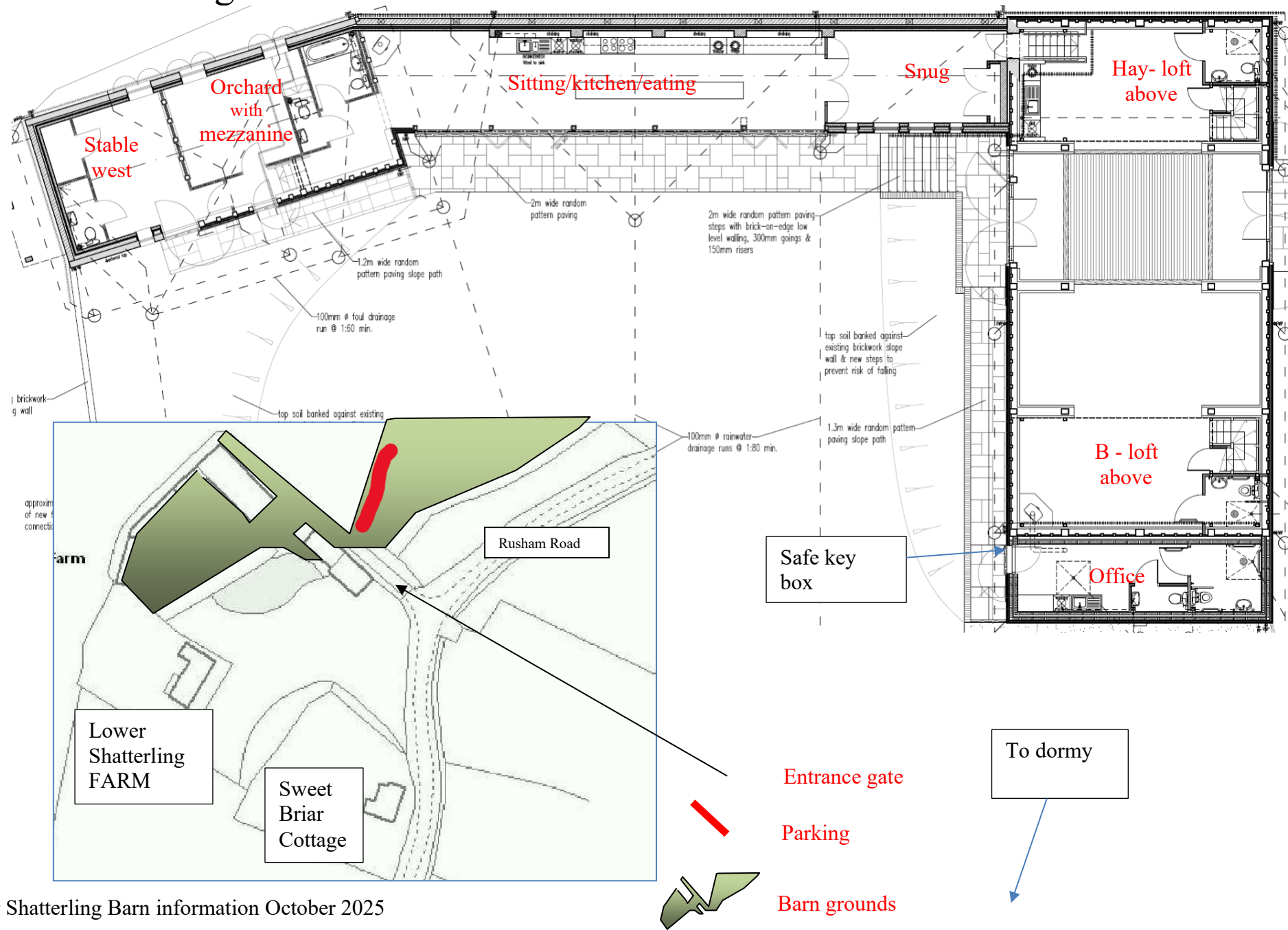


Lower Shatterling Barn



Accommodation

The west wing				Main barn			Office	Shepherd's hut	Dormy		Total
Stable west	Orchard	Long room/ kitchen	Snug	Barn upper mezzanine – hayloft	Barn upper mezzanine - b-loft	Main barn/ threshing floor area	Bedroom/ utility/ shower room	Outside hut	Downstairs	Upstairs	
Twin/ double bedroom with room for 2 further put up beds.	Dormitory ; three single beds, one bunk bed in main room, three single beds on upper mezzanine	Sitting area with wood burning stove. Long kitchen with seating for 20 on bar stools round movable islands, and 8 round table. Double sofa bed.	Sitting area Day bed Double Sofa bed	Large sleeping area Double Sofa bed Snuggler (single sofa bed) 3 x Single beds	Large sleeping area Snuggler 4 x Single beds 1 bunk bed	More than 1,000 sq ft activity area, including wood burning stove & 2 double sofa beds in curtained south west corner.	Twin/ double bedroom Washing machine for emergencies	Single/small double bed High level single bed Wood- burning stove	Single/twin/ double beds Kitchen area	4 single beds	
Sleeps 2+ 2	Sleeps 8 +2	+2	Sleeps 2	Sleeps 6+ 2	Sleeps 7+ 1	Sleeps 2+ 2	Sleeps 2	Sleeps 2 +1	Sleeps 2	Sleeps 4 +2	37+15
En suite shower room/toilet	Bathroom/ toilet & toilet on lower level			2 x shower room/ toilet at ground level			Ensuite shower room/toilet	Facilities in one of the other areas	Toilet Shower	Toilet	

Depending on what has been agreed you will have access to parts of the above – others may be occupying the other areas.

General information

Contact Andrew Neden 07710 662741 Andrew@neden.org.uk

Address Lower Shatterling Barn, Rusham Road, Wingham, CANTERBURY, Kent. CT3 1JL. Public transport – the 43 bus runs from Canterbury bus station to Sandwich; and can be accessed by walking from either of the Canterbury rail stations to the bus station. The nearest rail station is Adisham (access from Victoria or Bromley South). Alternatively the quickest to get to from London St Pancras is Sandwich. Arrival by coach is not recommended. The narrow lanes are not suitable for close drop off.

Parking - There is parking for 20 cars on hard standing on the field at the entrance to the property. And a number of places nearer to the barn for the less able.

Kit A lot of cooking equipment, cutlery, crockery and jugs etc in the property – There is a large range oven with three ovens and five induction hobs, fridge/freezer and eg two 5.5 litre slow cookers. There are two dishwashers – one by the sink in the longroom – and a second in the kitchenette in the barn. There is a large drum wood/charcoal bbq. Additionally the Dormy has a fridge freezer, microwave, dishwasher and air/fryer cooker etc.

In main barn TV and amp with old style scart connectors and computer cable (not HDMI). DVD player. Key board and stand – very inexpensive and not concert quality (Yamaha 54030). Large speakers with large input plugs. Further large screen TV in long room.

20 stools for long room eating, 30 Fold up chairs and many more chairs, sofas etc. seating over 100.

BT Wi-fi on site, landline phone for incoming calls

Heating and hot water provided by air source heat pump, oil-fired boiler and immersion heater giving underfloor heating throughout, supplemented by wood-burning stoves.

Board games – Pictionary, Articulate, Mapominoes, Scrabble, Code Names, Creationary (Lego), Monopoly, Cleudo and others

Pets by prior arrangement.

Local activities

Dover Castle

White Cliffs experience Dover

Sandwich Bay walks

Countryside walks

Howletts Zoo

Wingham Wildlife park

Sandwich old town walks

Sandwich river walks

Sandwich river cruise

Richborough Roman fort

Dover harbour sailing

Canterbury sightseeing

Goodnestone Park Gardens

Quex Park

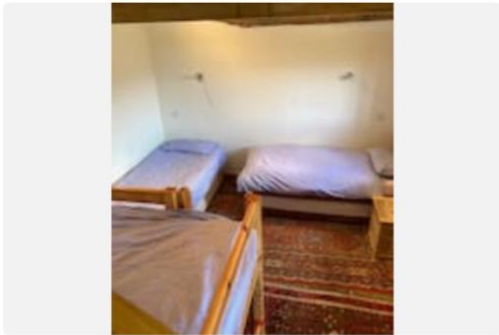
Bicycling

Golf *Princes, Royal St George's, Royal Cinque Ports, St Augustine's, North Foreland, Stonelees.*

Walks/orienteering. Good walks on local footpaths through the orchard and further

Bluebell walk and river swim.

Use field to the east of property for games





09:37 Thu 20 May

82%



09:37 Thu 20 May

82%

